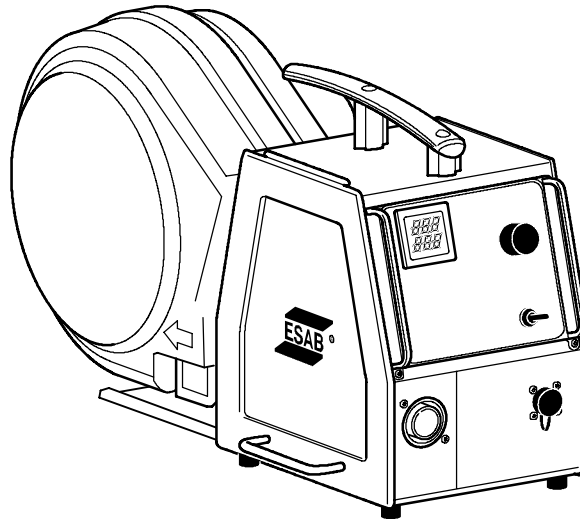


Spare parts list

Edition 060914



Valid for serial no. 338-xxx-xxx, 620-xxx-xxxx-xxx-xxxx

The wire feed unit is renamed:

New name	Old name
Origo™ FeedAirmatic M10	ESABFeed Airmatic

Ordering no.	Product
0459 116 680	Origo™ FeedAirmatic M10

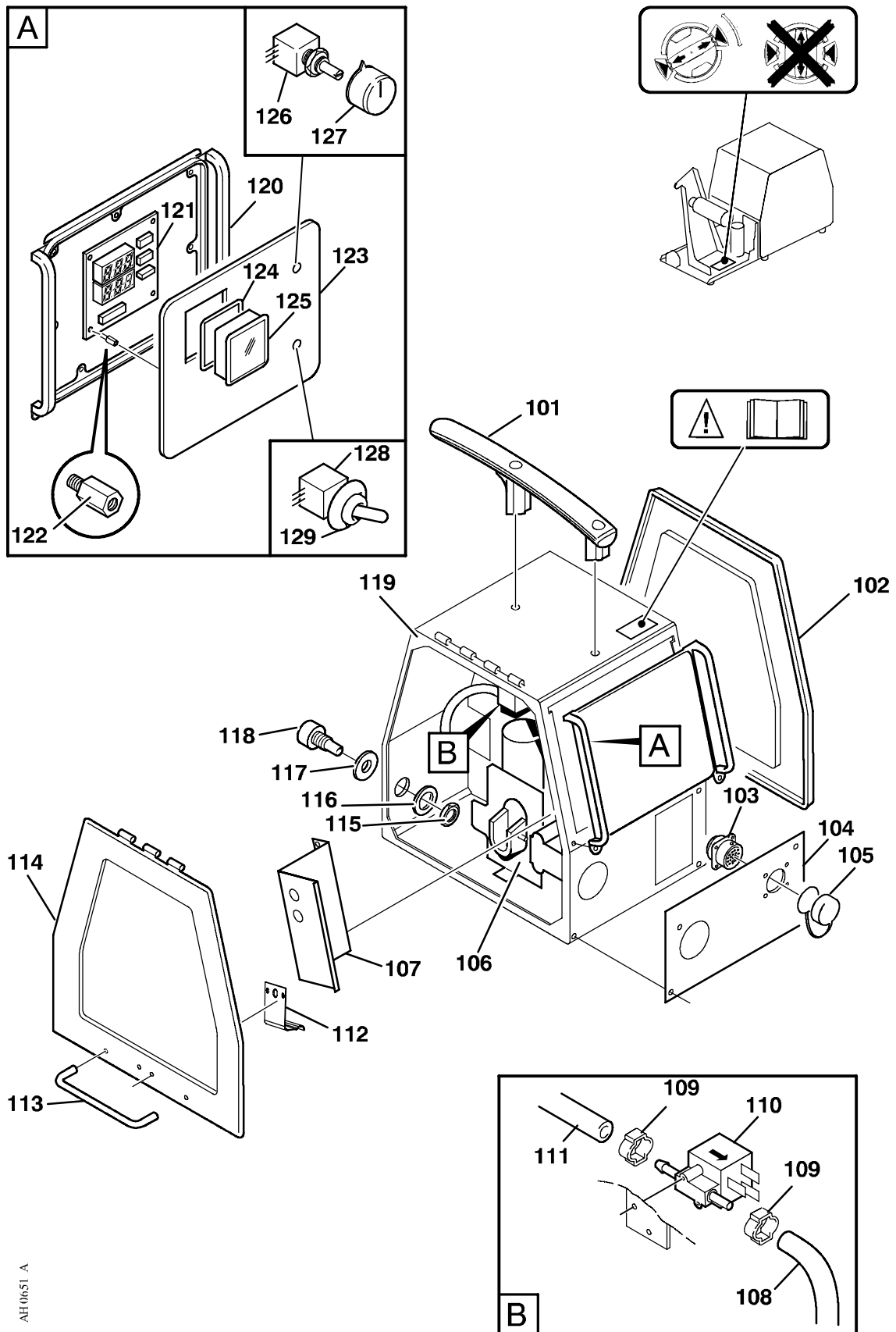
Spare parts are to be ordered through the nearest ESAB agency. Kindly indicate type of unit, serial number, denominations and ordering numbers according to the spare parts list.

Maintenance and repair work should be performed by an experienced person, and electrical work only by a trained electrician. Use only recommended spare parts.

Rights reserved to alter specifications without notice.

(W) = wear part C = component designation in the circuit diagram

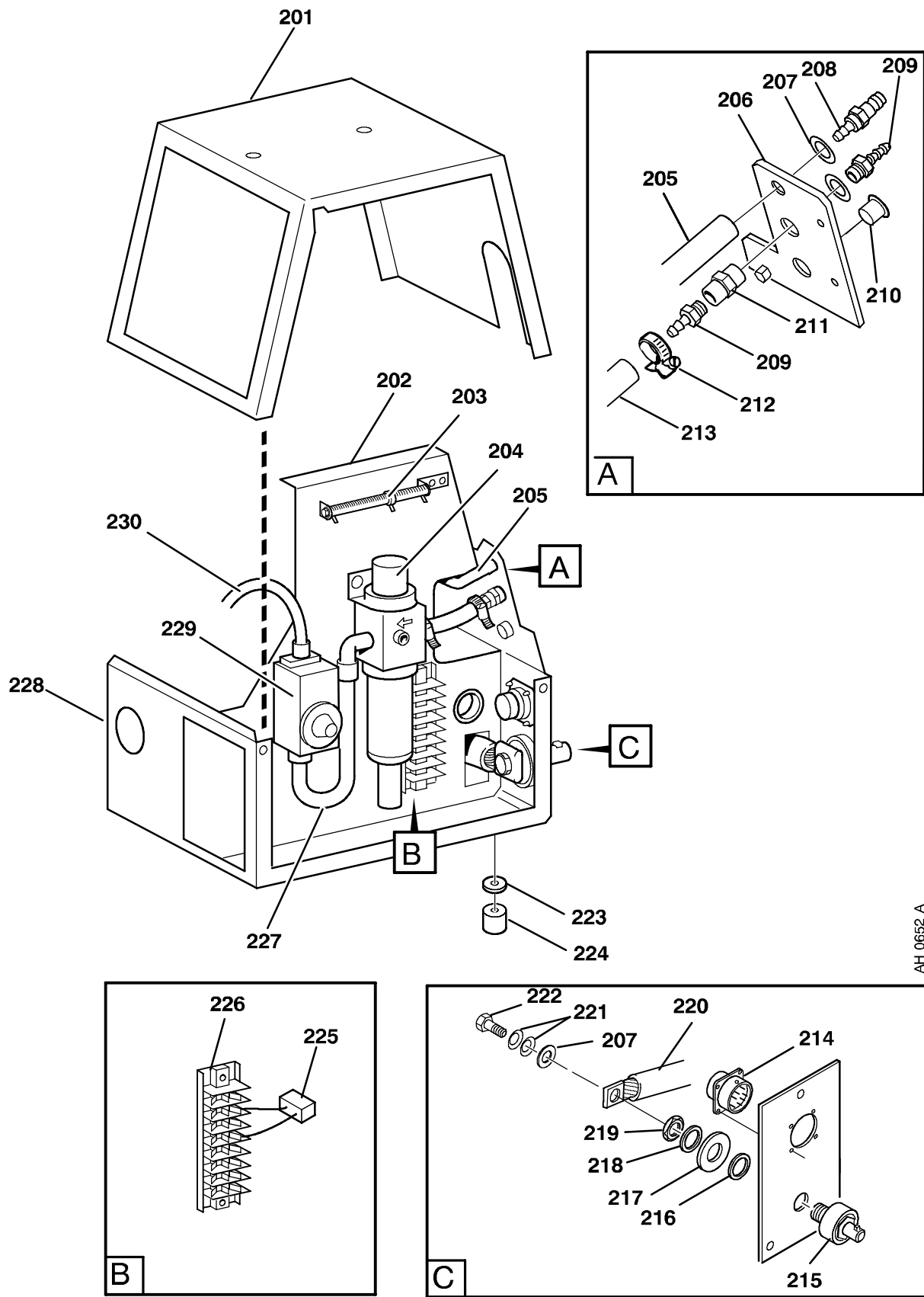
Item	Qty	Ordering no.	Denomination	Notes	C
101	1	0459 119 001	Handle		
102	1	0459 069 002	Side panel		
		0459 213 001	Label for side panel		
103	1	0368 544 005	Socket	23 pole panel socket	13XS1
		0323 945 003	Sleeve	For 23 pole socket	
104	1	0459 363 001	Front plate	A9a	
105	1	0455 516 001	Protection cap	23 pole	
106	1		Wire feed mechanism	See page 6.	
107	1	0459 148 001	Protectiv cover MMC panel		
108	1	0456 496 001	Hose , red	L=0.33mm, Ø 9/5mm, to be ordered per meter	
109	2		Hose clamp	Ø 11.3/10.8	
110	1	0193 054 002	Solenoid valve		13YV1
111	1	0456 496 001	Hose,red	L=0.27mm, Ø 9/5mm, to be ordered per meter	
112	1	0459 547 001	Locking device	Replacing 0367 902 001	
113	1	0458 777 001	Protection clamp	Handle	
114	1	0459 069 001	Side panel		
		0459 213 001	Label for side panel		
115	1		Nut	M10	
116	1	0458 748 002	Insulating washer		
117	1	0458 748 001	Insulating bushing		
118	1	0156 602 001	Inlet nozzle (W)	Ø 2mm plastic for 0.6-1.2 mm, Fe, Ss and Al wire	
119	1	0192 526 002	Sealing strip	L=1.34mm	
120	1	0459 118 001	Protection fram		
121	1		PC-board	See accessories on page 10.	
122	3		Spacer screw	Included in item 121.	
123	1	0459 131 005	Label	M10	
124	1	0455 174 001	Gasket		
125	1	0455 172 001	Instrument glass		
126	1	0191 870 512	Potentiometer		13RP1
127	1	0321 475 882	Knob		
128	1	0147 866 001	Switch		13SA1
129	1	0147 866 009	Cover rubber		



AH0651_A

C = component designation in the circuit diagram

Item	Qty	Ordering no.	Denomination	Notes	C
201	1	0459 071 881	Cover		
202	1	0459 099 001	Middle plate		
203	1	0190 690 117	Resistor	50 W, 22 ohm. To be set on 16.2 ohm.	13R1
204	1	0157 467 880	Filter regulator		13A1
205	1		Hose, red	See item 111.	
206	1	0458 658 001	Plate connections		
207	2		Washer	Ø 10.5x22	
208	1	0367 149 001	Inlet plug		
209	2	0011 118 504	Hose nipple		
210	1		Cover plug	Ø 12.7	
211	1	0456 666 001	Muff	1/8"	
212	1		Hose clamp	Ø 11.3/10.8	
213	1	0190 343 102	Hose	L=0.065mm, Ø 12.7/6, To be ordered per meter	
214	1	0368 543 005 0323 945 004	Connector Pin	23 pole panel plug For 23 pole plug	13XP1
215	1	0160 609 881	Welding current terminal		
216	1	0466 625 001	Gasket		
217	1		Spacer ring	Included in item 215	
218	1		Washer	Included in item 215	
219	1		Nut	Included in item 215	
220	1	0459 147 880	Cabel set		
221	2		Spring washer	Ø 20/10.2x1.1	
222	1		Screw	M10X20	
223	4		Plastic spacer	Ø 20/6.4	
224	1	0467 695 001	Rubber foot	Ø 20/6.4x3. A set of 4 rubber feet.	
225	1	0459 451 880	Contact protection	RC circuit	13C1
226	1	0466 884 008	Connection	8 pole	13XT1
227	1	0190 343 102	Hose	L=0.19mm, Ø 12.7/6, To be ordered per meter	
228	1	0458 662 880	Bottom plate		
229	1	0030 470 583	Flow relay		13SP1
	1	0041 034 880	Relay switch	Included in item 229	
230	1	0190 343 102	Hose	L=0.32mm, Ø 12.7/6, To be ordered per meter	

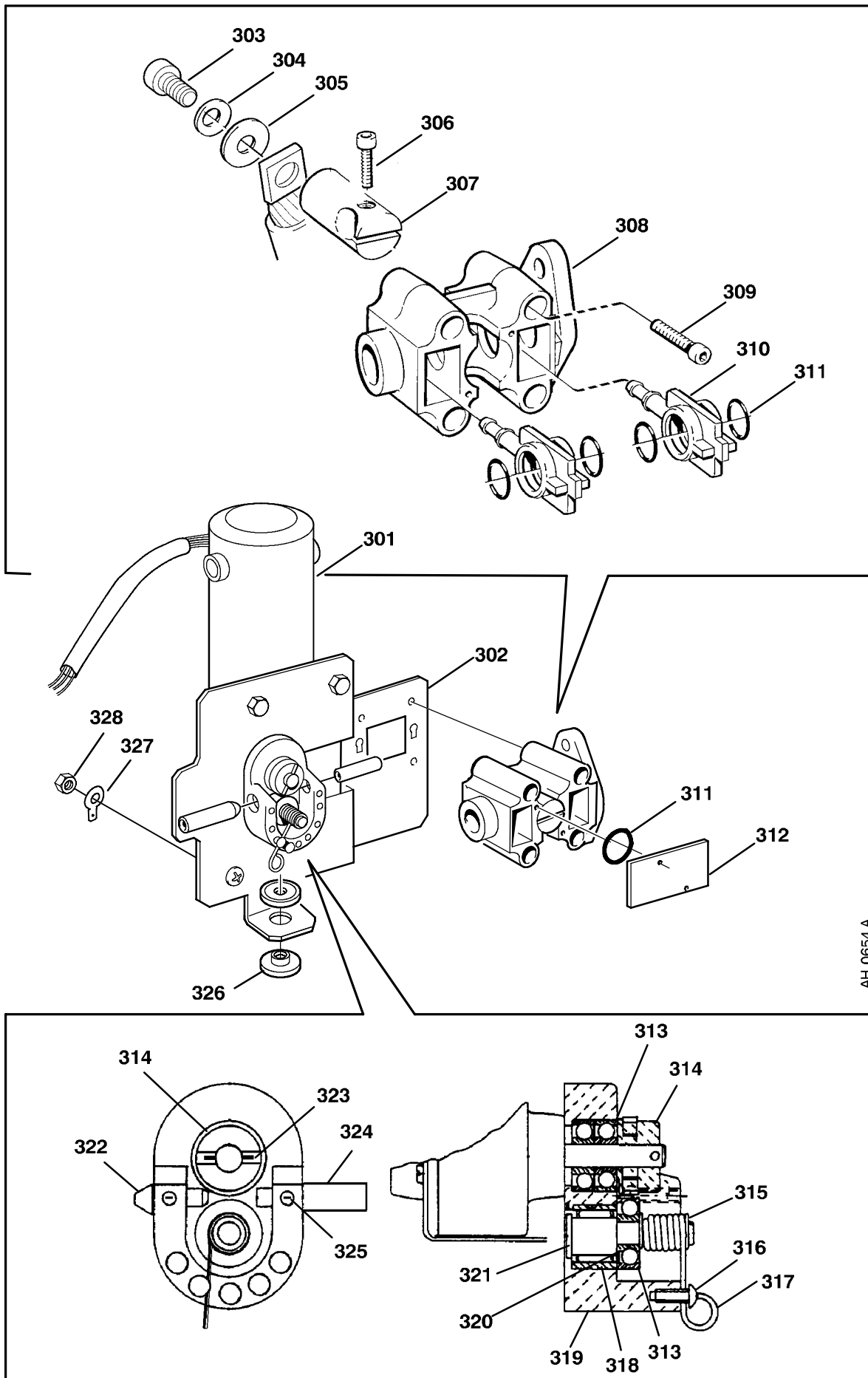


AH 0652 A

(W) = wear part C = component designation in the circuit diagram

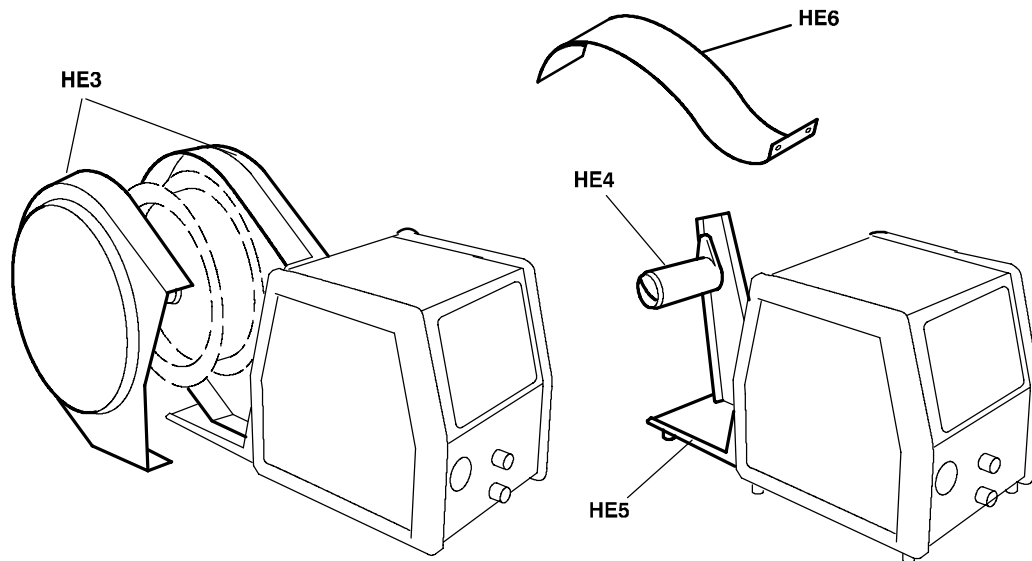
Item	Qty	Ordering no.	Denomination	Notes	C
		0459 442 880	Wire feed mechanism	Type A9a	
301	1	0238 500 002	Wire feed motor		13M1
	1	0152 504 002	Cover	For motor 13M1	
	1	0151 729 016	Carbon brush	(W) Set of 2 brushes	
302	1	0459 352 001	Mounting plate		
303	1		Screw	M10x20	
304	1		Spring washer	D20/10,2	
305	1		Washer	D22/10,5x2	
306	1		Screw	M5 x 20	
307	1	0156 706 001	Cable fixture		
308	1	0157 203 001	Connection plate		
309	4		Screw	M5x35	
310	2	0156 597 001	Connection device		
311	5	0215 201 212	O-ring	14.3x2.4 mm	
312	1	0459 439 001	End plate		
313	3	0151 913 001	Ball bearing		
314	1	0458 229 001	Feed roller	(W) For 0.6 - 1.0 mm wire	
	1	0458 229 002	Feed roller	(W) For 1.0 - 1.6 mm wire	
315	2	0215 701 003	Cir clip		
316	2	0212 904 119	Screw	Nr 6x10	
317	1	0219 900 302	Torsion spring		
318	1	0221 307 711	Needle bearing		
319	1	0671 329 501	Casing		
320	1		Washer	Ø 10/6.2	
321	1	0223 909 901	Eccentric shaft		
322	1	0258 005 101	Outlet nozzle		
323	1		Roll pin	2x16 mm	
324	1	0332 419 001	Inlet nozzle		
325	2		Locking screw	M4x8	
326	2	0153 043 002	Insulating washer		
327	1		Flat pin	Ø 6.3x9.5, M6	
328	1		Nut	M6	

For more wear parts see page 9.



AH 0654 A

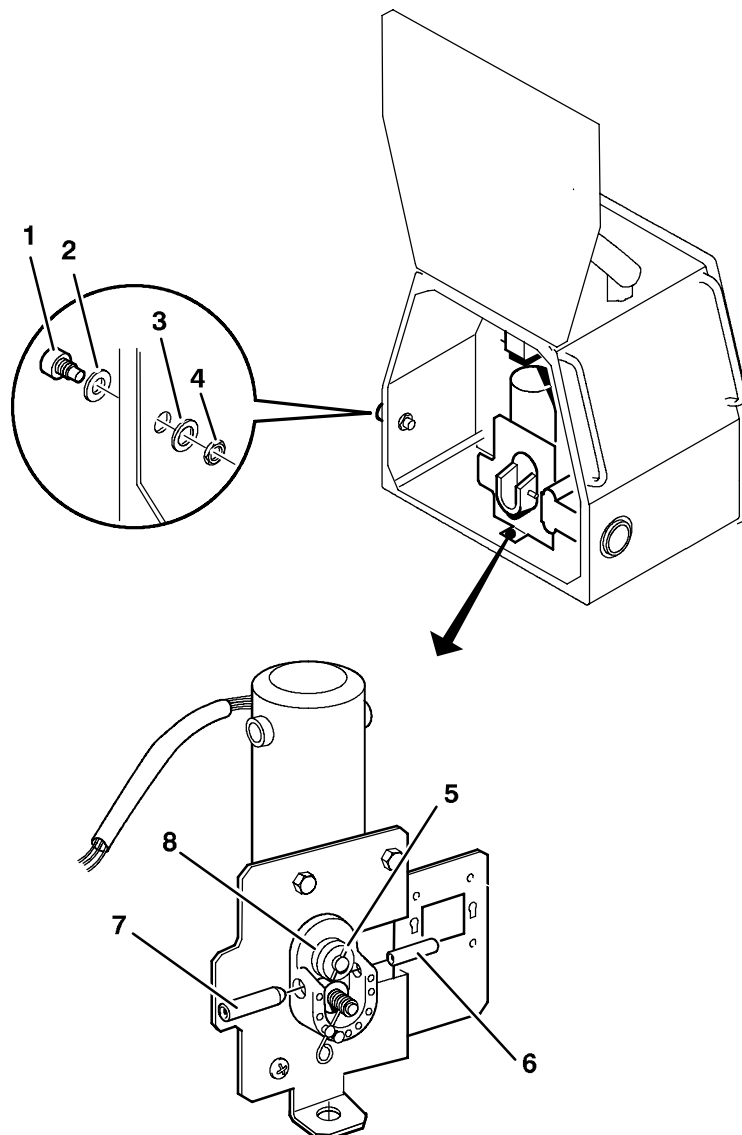
Item	Qty	Ordering no.	Denomination	Notes
HE3	1	0458 674 880	Bobbin cover	
HE4	1	0146 967 881	Brake hub	
HE5	1	0458 676 880	Fixed boom	
HE6	1	0156 633 003	Reel cover	



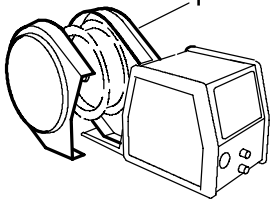
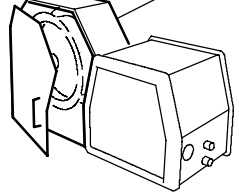
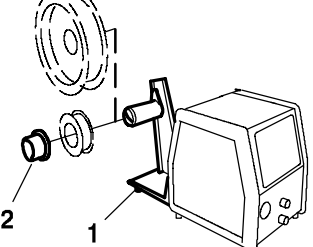
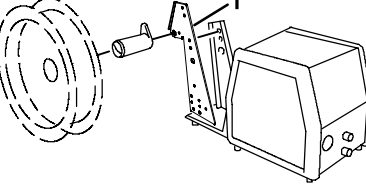
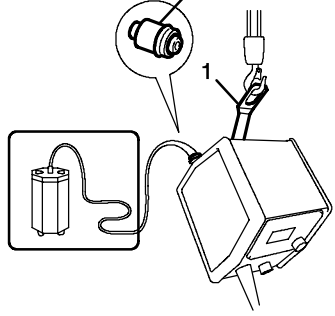
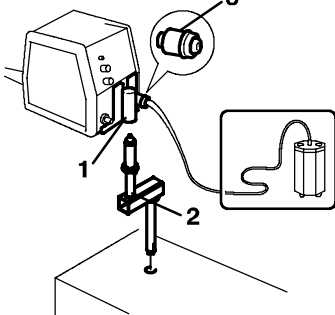
Wear components

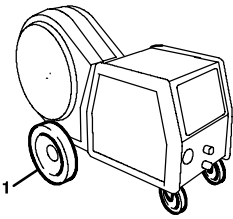
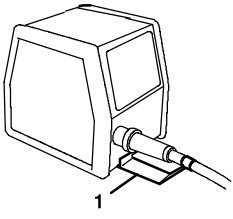
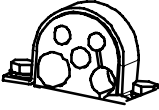
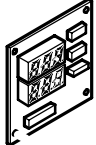

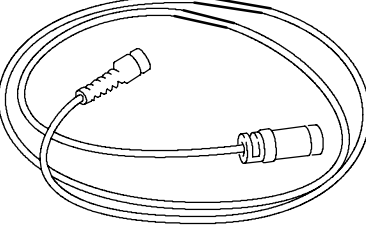
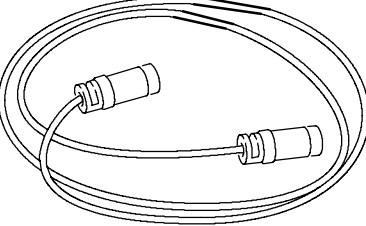
Item	Ordering no.	Denomination	Note
1	0156 602 001	Inlet nozzle	Ø 2 mm plastic for 0.6-1.6 mm, Fe, Ss, Al & Cored
2	0458 748 001	Insulating bushing	
3	0458 748 002	Insulating washer	
4		Nut	M10
5		Roll pin	Ø 2x16 mm
6	0258 005 101	Outlet nozzle	Ø 1.5 mm
7	0332 419 001	Inlet nozzle	Ø 2.0 mm
8	0458 229 001 0458 229 002	Feed roller Feed roller (S)	For Ø 0.6 - 1.0 mm wire For Ø 1.0 - 1.6 mm wire

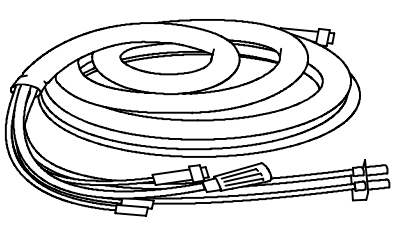
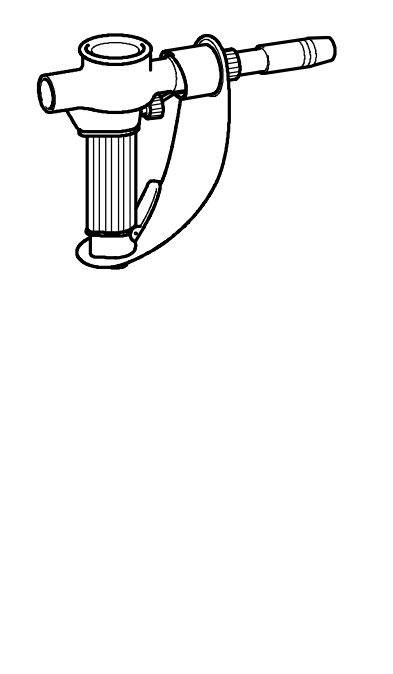
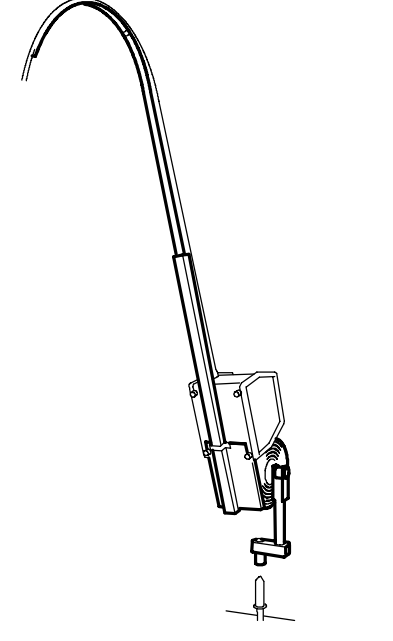
S= Standard



Accessories

	<p>1 Bobbin cover, plastic Ø 300mm 0458 674 880</p>
	<p>1 Bobbin cover, metal Ø 300mm 0459 431 880</p>
	<p>1 Bobbin holder 0458 704 880 2 Adapter for 5 kg bobbin 0455 410 001</p>
	<p>1 Adapter for 440 mm bobbin 0459 233 880</p>
	<p>1 Lifting eye 0458 706 880 2 Quick connector MarathonPac™ F102 440 880</p>
	<p>1 Turning piece 0458 703 880 2 Guide pin 0156 654 883 3 Quick connector MarathonPac™ F102 440 880</p>

	<p>1 Wheel kit 0458 707 880</p>
	<p>1 Strain relief for welding gun 0457 341 881</p>
	<p>Strain relief bracket for connection set 0459 234 880</p>
	<p>Digital Volt / Ampere meter for ESABMig 400t and ESABMig 500t 0455 173 882</p>
	<p>Remote control unit M1 0459 491 895 MIG/MAG:wire feed speed and voltage</p>
	<p>Remote cable 23 pole - 8 pole 5 m 0459 553 880</p>
	<p>Extension cable for remote control 23 pole 8 m 0467 197 880 16 m 0467 197 881</p>

	<p>Connection set for 400 A power sources</p> <p>Connection set 1.7 m 0469 836 900</p> <p>Connection set 5 m 0469 836 901</p> <p>Connection set 10 m 0469 836 902</p> <p>Connection set 15 m 0469 836 903</p>
	<p>Welding gun PKB 250 and PKB 400</p> <p>PKB 250 0152 700 881</p> <p>PKB 400 0152 470 881</p> <p>Welding hose for PKB 250, 5 m 0468 790 880</p> <p>Welding hose for PKB 250, 10 m 0468 790 881</p> <p>Welding hose for PKB 250, 16 m 0468 790 882</p> <p>Welding hose for PKB 400, 5 m 0468 790 883</p> <p>Welding hose for PKB 400, 10 m 0468 790 884</p> <p>Welding hose for PKB 400, 16 m 0468 790 885</p> <p>Curved swanneck for PKB 250 Ø 9 mm, 60° .. 0469 320 880</p> <p>Straight swanneck for PKB 250 Ø 8 mm 0368 002 880</p> <p>Curved swanneck for PKB 250 Ø 8 mm, 45° .. 0367 581 880</p> <p>Straight swanneck for PKB 250 Ø 9 mm 0368 002 883</p> <p>Curved swanneck for PKB 250 Ø 9 mm, 45° .. 0367 581 881</p> <p>Curved swanneck for PKB 400 Ø 9 mm, 60° .. 0469 321 880</p> <p>Straight swanneck for PKB 400 Ø 8 mm 0368 002 881</p> <p>Curved swanneck for PKB 400 Ø 8 mm, 45° .. 0367 582 880</p>
	<p>Counter balance device (includes mast and counter balance)</p> <p>for 300 mm bobbin 0458 705 880</p> <p>for 440 mm bobbin 0458 705 882</p>

